

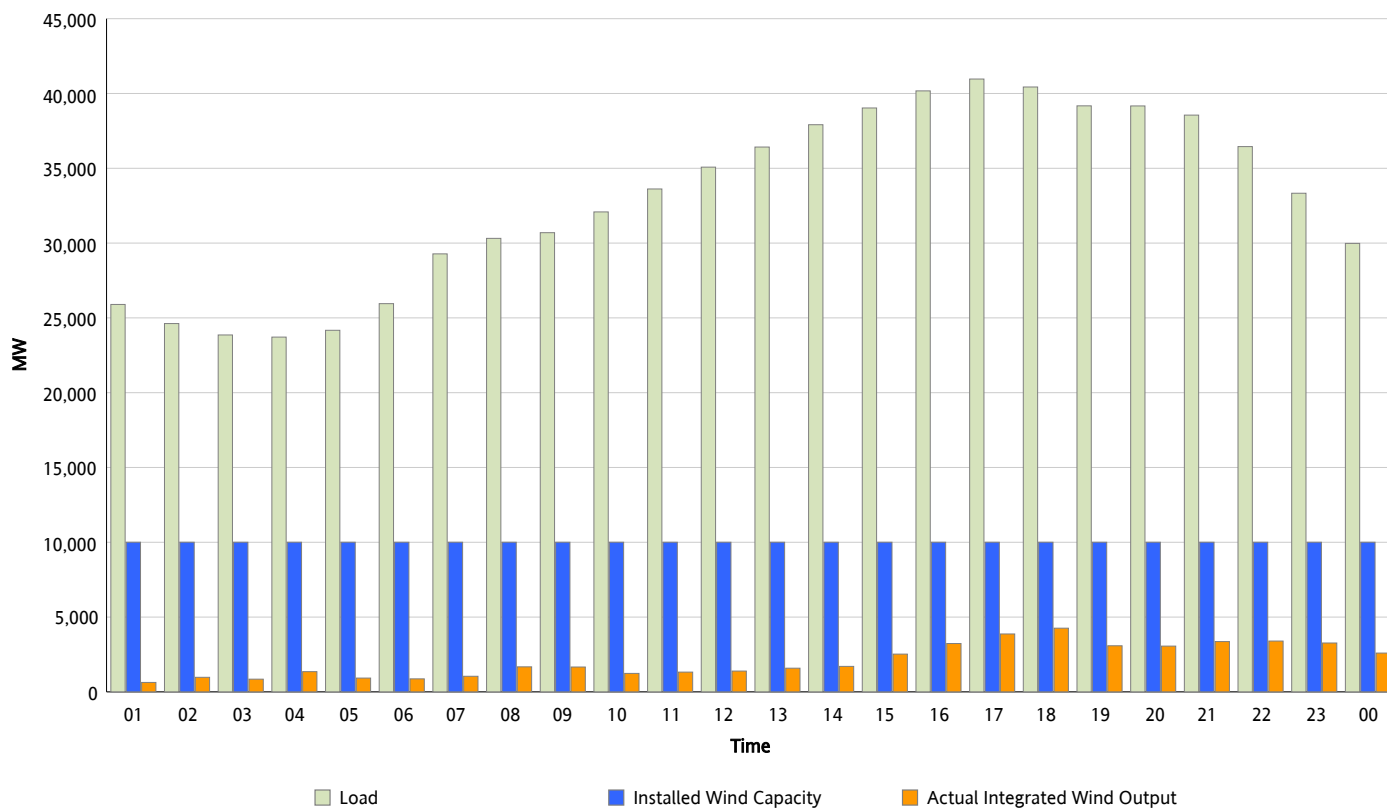


## ERCOT Grid Operations

### Wind Integration Report : 10/01/2012

Peak Load	40,966 MW
Load Peak Hour (HE)	17
Wind Over Peak	3,873 MW
Wind Record 06/19/12	8,368 MW
Max Wind Value*	4,460 MW
Wind Peak Time	17:23
Wind Integration %	11 %

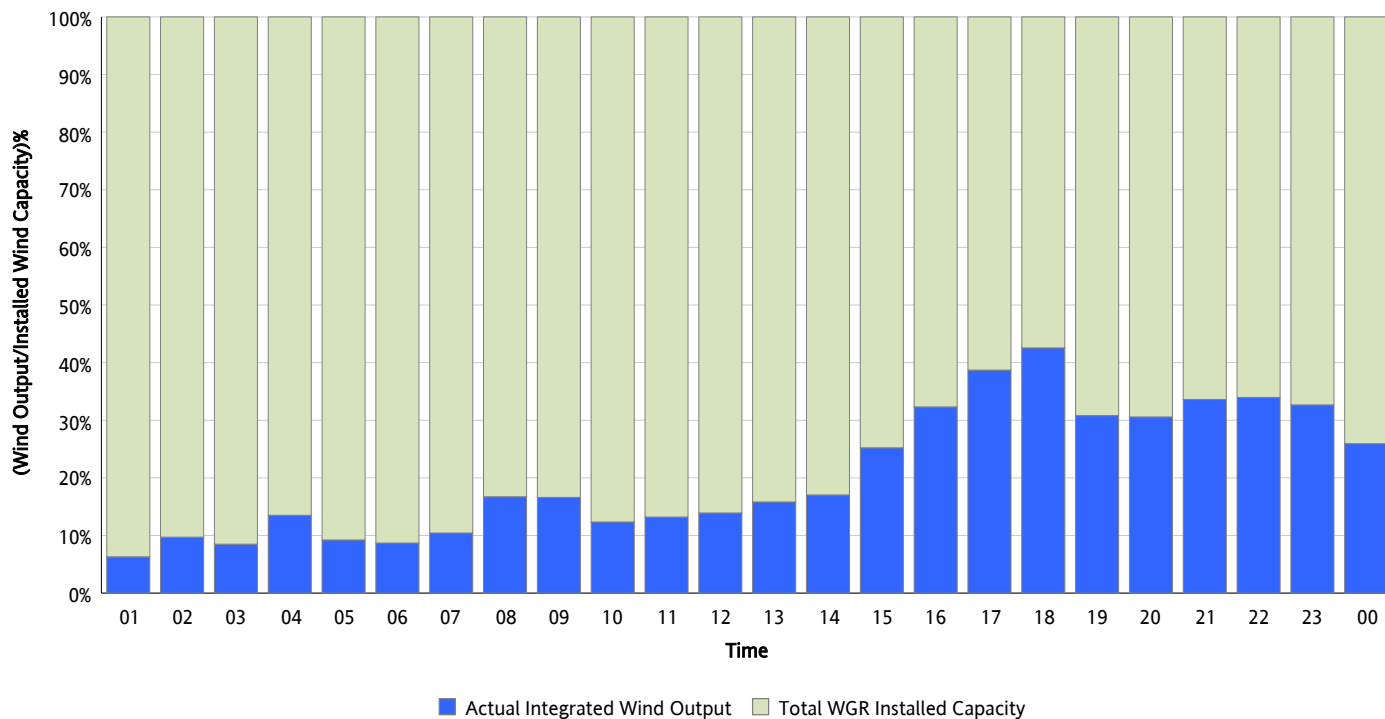
**Hourly Average Actual Load vs. Actual Wind Output**  
10/01/2012



*\* Wind Record and Wind Max represent instantaneous values and the rest of the values are integrated over the hour*

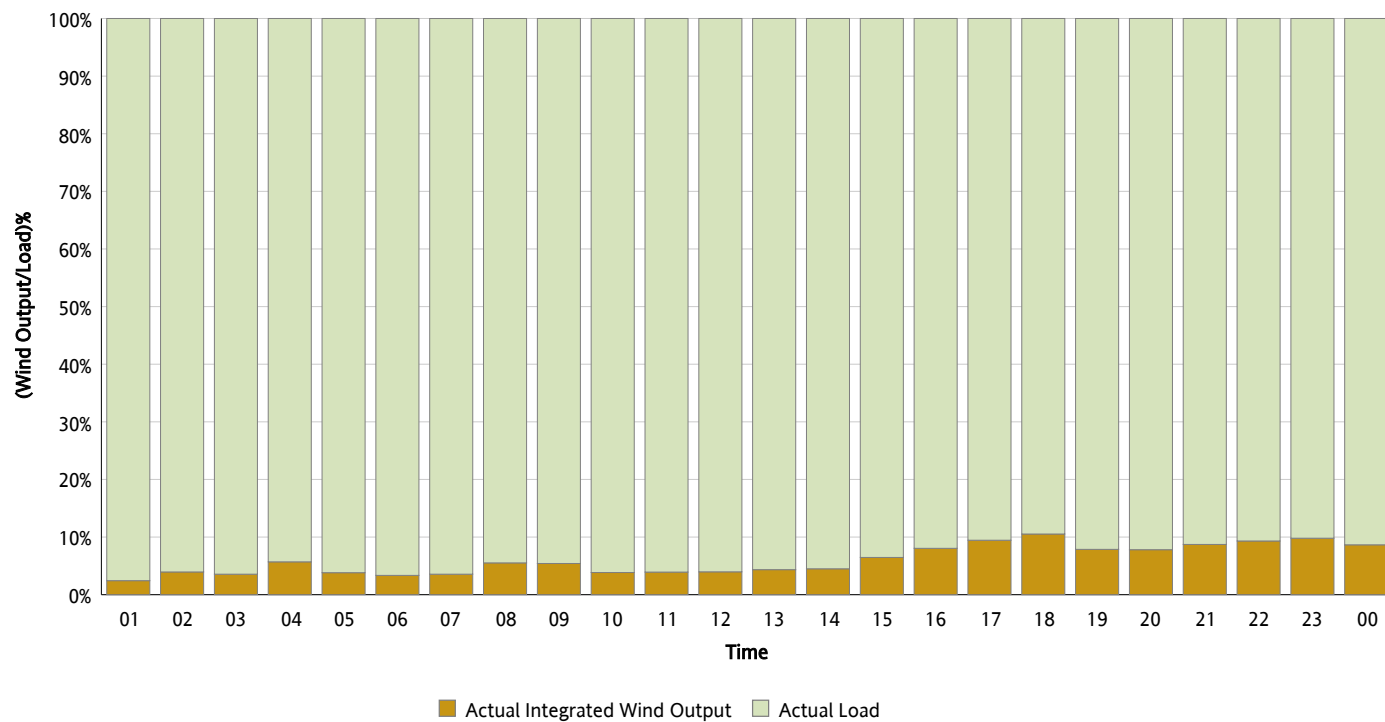
## Actual Wind Output as a Percentage of the Total Installed Wind Capacity

10/01/2012



## Actual Wind Output as a Percentage of the ERCOT Load

10/01/2012



## ERCOT Load vs. Actual Wind Output

09/24/2012 - 10/01/2012

